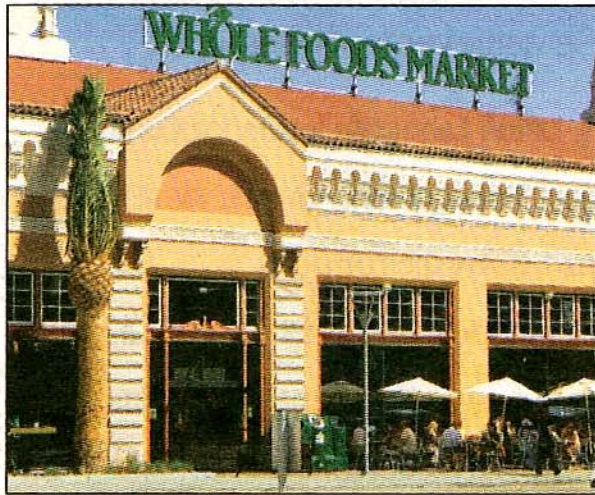


BEST NEW RETAIL

FINALIST: Whole Foods, Oakland



WHOLE FOODS

Location: 230 Bay Place, Oakland.

Size: 57,220 square feet.

Estimated value: \$44 million.

Developer: Bond CC Oakland LLC.

Architects: Lowney & Associates.

Contractors: Charles Pankow Builders Ltd.

Engineers: Civil Engineer: Sandis, Inc.;
Environmental Engineer Inc.

Broker: Matt Holmes, Retail West.

Downtown Oakland might not immediately seem like a typical location for a Whole Foods, sometimes called “Whole Paycheck.”

Yet that’s precisely where the Texas-based grocer decided to open a new \$44 million prototype store, its first in that city and Oakland’s first new grocery in 25 years. It might be just what is needed to spark retail action in this part of town where new residents are moving into

recently completed condo projects.

Since opening in September 2007, the store’s sales are 50 percent ahead of projections.

The final design included preserving the façade of the old Cox Cadillac Dealership, and the store interior is designed as a loop that lets shoppers get around it quickly and easily.

— Sarah Duxbury ■